

Grade 8 - Unit 5 – Fresh and Saltwater Systems Concepts

Water Distribution

Water source	% of total water	Potable, or not?
Oceans	97.24%	Saltwater
Icecaps, Glaciers	2.14%	Frozen
Ground water	0.61%	Fresh - but not entirely accessible
Fresh-water lakes	0.009%	Potable
Inland seas	0.008%	Saltwater
Soil moisture	0.005%	Indirect access
Atmosphere	0.001%	Indirect access
Rivers	0.0001%	Potable
Total water	100%	

Water Action



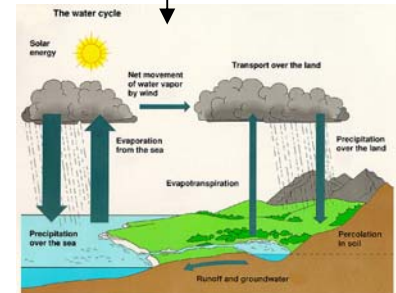
Water Systems

Watersheds
Continental Drainage Systems

Glaciers → Glacial Landform Features

Currents

Climate



Water Quality

Chemical

Biological

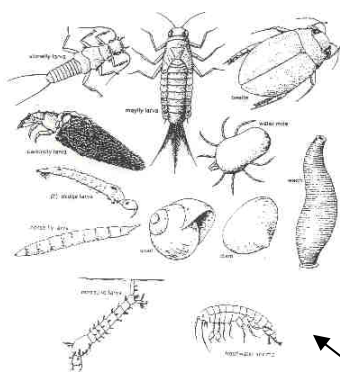
Water Quality Testing

Water, Water, Everywhere

Monitoring Quality

Water for Life

Biological Indicators



Factors Affecting the Diversity of Aquatic Organisms

Temperature
Light
Water Movement
Environmental Changes

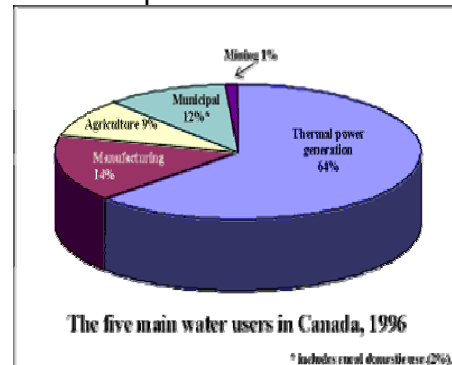
Pressure
Salinity

Seasonal Short-Term Long-Term

Water Use



Human Impact on Water Resources



Factors Affecting Water Quality
Runoff
Dumping
Spills

Sewage
Construction
Pollution